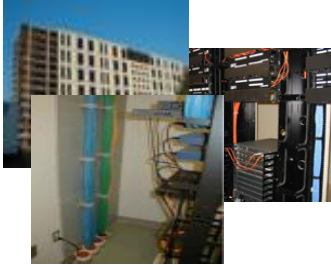


# IT Infrastructure Fire and Smoke Barrier Assessment

Firestop Inspector LLC [www.firestopinspector.com](http://www.firestopinspector.com) 732-232-2100



## IT Infrastructure Benefits from Best Practices Fire and Smoke Wall Management

### Benefits of Managing Barriers

- Loss Control and Containment
- Protect Equipment and Assets
- Liability Management
- Hold Contractors and Landlords Accountable and Charge Back
- Critical Facilities Management
- Standardize Program has a Best Practice Efficiency
- Cost Savings Benefit from Planning

### Fire and Smoke Barrier Terms you need to know ...

**Rating**— Measurement of Protection Provided by a Wall or Floor Usually Expressed 1 Hr, 2Hr, 4 Hr, etc.

**Penetration**- When an object such as conduit, cable, duct or pipe goes through a rated fire or smoke barrier.

**Tested Systems Directory** — List of 5000+ Underwriters Laboratories tested repair systems for rated barrier penetrations.

**Draft Stop or Smoke Seal**—Construction assembly designed to limit the migration of smoke and fire.



Simultaneous Data-Photo Capture Software for the PDA creates accurate, customized reports from the field.

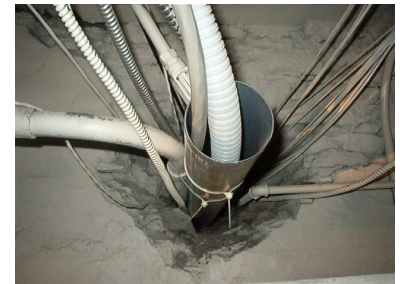
All buildings are engineered with fire rated walls and floor designed to contain smoke and fire. Openings created in these “rated” walls and floors by cable, conduit, pipe, ductwork, installed equipment and building modification can **compromise safety and jeopardize business continuity.**

Proper fire and smoke stop techniques, using tested systems to repair barrier breaches, can contain an incident. **Controlling of smoke and toxic gas created by a fire, incident or accident can minimize loss.**

**Mission critical infrastructure has critical components to it. Fire and smoke wall breaches need to be repaired with tested systems to provide containment of an incident.**

Building modifications, new equipment installations, mechanical, electrical and HVAC systems and new construction all need to be considered when managing fire and smoke walls and floors.

Outside contractors and neighboring tenant activities should also be considered in multi use facilities when looking at incident containment.



Building modifications can compromise safety when openings in rated walls are not properly repaired.

The best practices approach includes standardizing your program, assuring accountability and maintaining documentation needed to manage fire and smoke wall penetrations. Fire and smoke barriers protect your business. **Maintaining their integrity is a critical component** of effective business continuity and emergency preparedness planning initiatives.

### Why should I assess for Fire and Smoke Barrier Breaches?

**Unprotected openings in walls and floors create an imminent hazard to your operations.** Left unmanaged, breaches in your facilities infrastructure leave your operations at risk to migration of smoke and fire. Smoke can damage equipment and using a Best Practices approach to managing these issues provides a loss control benefit to your business, giving you the competitive edge in safety and asset protection.

### What is included in an Initial Assessment?

**Firestop Inspector services are designed to make compliance to codes and standards for fire and smoke containment simple and cost effective. Our initial fire and smoke barrier assessment service costs \$1,500.00 and includes the following deliverables:**

On-site audit of critical locations in the facility to assess fire and smoke barrier integrity

Review of documentation, plans and records with recommendations for compliance

A **Barrier Condition Report** including barrier identification and fire and smoke stop status

**Please call 732-232-2100 for more information.**

